



## Workbench WB 630

### WB 630

Product no.	<b>85010630</b>
GTIN	<b>4018754359981</b>
Model	<b>WB 630</b>



#### Label.

Workbench WB 630 1 Drawer anthracite, RAL 7016; black, RAL 9005 L.725mm x W.2000mm x H.1281-1586mm

#### Properties.

- ready-to-install design
- tool chest bracket including fasteners material suitable for No. 93 TOP BOX
- lockable drawer (including 2 keys) with full extension runners with bearing cage guide
- with non-slip drawer mat
- large work surface with rubberwood worktop, 30 mm thick, with FSC certification
- integrated perforated back panel for fitting tools and e.g. hooks, spray can holder, paper roll holder, etc.
- with EU 3-way plug adaptor, 2 USB ports, and 2 rubberised cable grommets
- height-adjustable legs (by 305 mm) with levelling feet (M12)
- body RAL 7016, in durable, industrial powder coating
- dimensions: width 2,000 mm, depth 725 mm, adjustable height with back panel: 1,281-1,586 mm, without back panel: 773-1,078 mm
- internal drawer dimensions: 530 x 350 x 74.5 mm
- can be equipped with STAHLWILLE TCS inlays
- available separately: Tool box TOP BOX 93 (81200157) and tool assortment TCS 821/6 (97830255)

## Benefits.

Generous working surface with a width of 2,000 mm with solid rubberwood worktop, FSC certified.

With spacious, lockable drawer with full extension and ball bearing guide and custom-made safety lock for our TOP BOX 93.

The addition of the TOP BOX 93 (81200157) and the 157-pieces tool set TCS 821/6 (97830255) increases the functionality of the workbench.

Variable table height and sturdy levelling feet support efficient and ergonomic working even on uneven floors.

Integrated socket and 2 USB connections with cable outlets allow easy use and charging of power tools and mobile devices.



## Product highlights.



### Work surface for the highest demands.

The solid FSC-certified rubberwood plate is particularly large with a width of 2,000 mm and provides a stable base for demanding daily work.



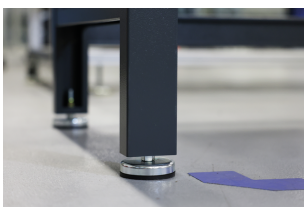
### Ergonomic working.

Thanks to adjustable legs, the table height can be flexibly adjusted to individual needs and for optimal ergonomic working in a 25 mm grid height adjustment.



### Modular storage solution.

With its modular organisation, the workbench offers plenty of space for your tools. This enables our TOP BOX tool box with 4 drawers to be perfectly integrated into the matching holder. A large, lockable drawer on the opposite side provides additional secure storage space.



### Optimum stability.

The levelling feet enable precise and stable alignment of the WB 630 for a secure positioning even on uneven surfaces.



### Direct power supply.

The workbench is equipped with 2 USB ports for charging electronic devices directly on site. A 3-way plug adapter and rubberised cable grommets on each side enable efficient power supply for cordless power tools.



### Mobile and flexible.

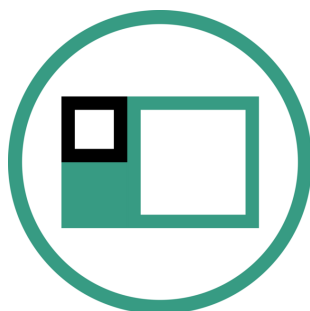
With the matching wheel set R 630, our workbench can now be used even more flexibly. 4 swivel castors with locking brakes ensure safe and stable working at the desired location. The high-quality rubber wheels (Ø 125 mm) offer smooth running and high driving comfort. Thanks to the height-adjustable design, the ergonomic working height is maintained even in mobile use. A thread guard prevents threads from wrapping around the axis and interfering with movement. Note: Retrofitting reduces the maximum static load capacity of the workbench from 1,000 kg to 600 kg.

## Technologies and features.



### Tool Control System

The intelligent modular inlay system protects and organises the tools in tool boxes, tool trolleys and workbenches. Two-colour foam inlays make checking the completeness of the tools quick and easy.



### Modular Inlay System

This flexible solution for tool storage makes it possible to customise your tool trolleys and workbenches with 1/6, 1/3, 2/3 or 3/3 foam inlays.

## Technical drawing.



## Technical attributes.

Length mm (L)	725 mm
Width mm (b)	2000 mm
Number of drawers	1
Load capacity	1000 kg

## Logistics data.

Product no.	85010630
GTIN	4018754359981
Weight (g)	102500 g
Volume (packaged, dm <sup>3</sup> )	572.068575 dm <sup>3</sup>

<b>Internal drawer dimensions mm</b>	530 x 350 x 74,5 mm
<b>Drawer load capacity</b>	30 kg
<b>variable height</b>	1281-1586 mm
<b>Colour</b>	anthracite, RAL 7016; black, RAL 9005

<b>Packing standard</b>	1
<b>WEEE/ElektroG</b>	nicht ear-pflichtig
<b>Customs tariff no.</b>	94032080
<b>Country of origin AWR</b>	CHINA
<b>Region of origin</b>	Ausländischer Ursprung
<b>Depth mm (IFS)</b>	2103
<b>Width mm (IFS)</b>	837
<b>Height mm (IFS)</b>	325
<b>Weight (gross, kg)</b>	102,600
<b>Weight PAP (kg)</b>	9,000
<b>Weight PVC (kg)</b>	0,000
<b>Length (packaged, mm)</b>	2103
<b>Width (packaged, mm)</b>	837
<b>Height (packaging, mm)</b>	325

## GTIN.



## Accessories (for).



81490007  
Wheel set



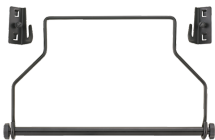
89010041  
Laptop holder



89010042  
Laptop holder adaptor



89010040  
Cable holder



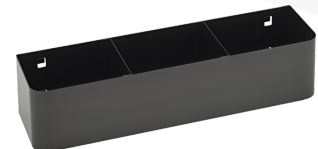
81483004  
Paper roll holder



89010052  
Waste bin



89010053  
Waste bin



90432719  
Spray can holder





90432727  
Spray can holder



80380030  
Container



89932000  
Spanner holder



90432779  
Magnetic tray



80310030  
Single hook



80310060  
Single hook



80310090  
Single hook



80320030  
Twin hook



80320060  
Twin hook



80340040  
Twin hook



80340050  
Twin hook



80350017  
Rectangular lug



80350020  
Rectangular lug



80360012  
Spring clip



80360018  
Spring clip



80360024  
Spring clip



81485006  
Spring clip



81485012  
Spring clip



81200157  
Tool chest

Spare part(s), spare part(s) for.



90433170

## Images.



**STAHLWILLE Eduard Wille GmbH**

Lindenallee 27 · 42349 Wuppertal · Germany · Phone: +49 202 4791-0

info@stahlwille.de · www.stahlwille.com

© STAHLWILLE Eduard Wille GmbH, Wuppertal