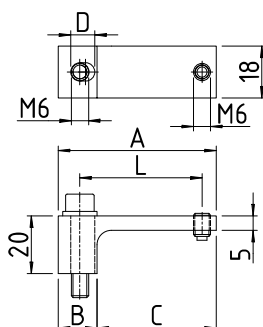


# opti-fix

## FRAME CLAMPING-BRACKETS

### Fastening brackets

For mounting of basic profiles or frames on measuring devices.



Delivered with M6 screw

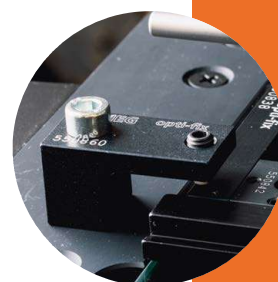
In case of application in t-groove, use K551352

Part No.:	Clamping range		Total length		Base length	Free length	Long hole	
	L min.	L max.	A	B	C	D	C	D
K550886	20,5	22,5	35,0	13,5	21,5	5,0	21,5	5,0
K550860	23,5	26,5	39,0	13,5	25,5	5,0	25,5	5,0
K550185	33,5	35,5	48,0	13,5	34,5	5,0	34,5	5,0
K550881	37,0	39,0	52,0	14,0	38,0	5,0	38,0	5,0
K550882	40,5	42,5	55,0	14,0	41,0	5,0	41,0	5,0
K550884	44,5	49,5	60,0	14,5	45,5	8,0	45,5	8,0
K550883	62,5	67,5	78,0	42,0	36,0	8,0	36,0	8,0
K550885	82,5	87,5	98,0	62,0	36,0	8,0	36,0	8,0

## APPLICATION

## PRODUCT LINES

opti-fix



Application of fastening brackets according to model.

Model	XY stage	Part No.:	qty.	Part No.:	qty.	Part No.:	qty.
		Bracket X		Bracket Y		T-groove nut	
PV-5110	200x100mm	K550886	2	K550886	1		
PJ-Plus PJ-A 3000	100x100mm			K550185	3	K550963	3
PJ-A 3000	150x50mm	K550886	2	K550886	1	K550963	2
PJ-Plus	200x100mm	K550881	2	K550860	1		
PJ-A 3000	200x100mm	K550886	2	K550886	1		
PJ H30A	100x100mm			K550886	3	K550963	3
PJ H30A	200x100mm	K550886	2	K550886	1		
PJ H30A	200x170mm	K550884	2	K550185	1		
PJ H30A	300x170mm	K550884	2	K550185	1		
QS-L2010	200x100mm	K550881	2	K550860	1		
QS-L3017	300x170mm	K550884	2	K550185	1		
QS-L4020	400x200mm	K550881	2	K550185	1		
QI-AB1010	100x100mm	K550860	2	K550860	1		
QI-AB2010	200x100mm	K550881	2	K550860	1		
QI-AB2017	200x170mm	K550881	2	K550860	1		
QI-AB3017	300x170mm	K550884	2	K550185	1		
QI-AB4020	400x200mm	K550881	2	K550185	1		
QI-C2010D	200x100mm	K550881	2	K550860	1		
QI-C2017D	200x170mm	K550884	2	K550185	1		
QI-C3017D	300x170mm	K550884	2	K550185	1		