

# MITRA 50

Instrument for measuring internal diameters and grooves  
 Strumento per misurazione di diametri e gole interne

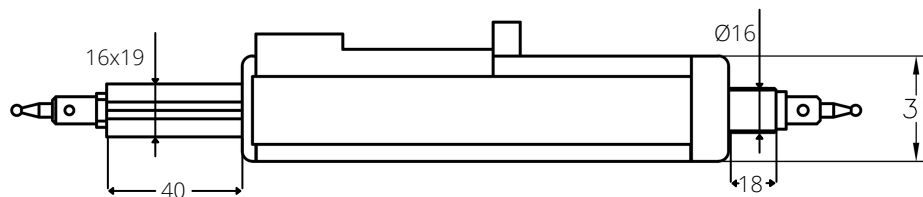
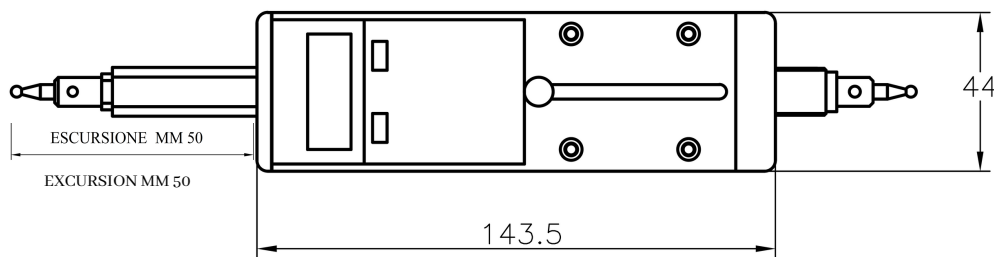


GROOVES CALIPER CALIBRO PER GOLE



- Digital instrument for internal measurements with excursion of mm 50, spring system
- Interchangeable rods with sphere,  $\phi$  by request
- Optional extensions in carbon fiber range 50 - 800 mm
- Large cursor excursion, for measurements of grooves depth 50 mm
- Manufactured on steel inox and aluminium
- Standard interchangeable rods sphere  $\phi$  3
- Strumento digitale per misurazione di interni con escursione mm 50, contatto a molla
- Puntali intercambiabili a sfera  $\phi$  a richiesta
- Prolunghe opzionali per campo di lavoro fino a mm 800
- Grande escursione del cursore, per misurazioni di gole profonde mm 50
- Costruito in alluminio anodizzato e acciaio inox
- Puntalini con terminali a sfera  $\phi$  3 di serie

**NEW**



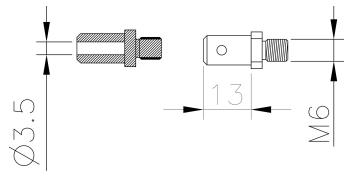
Article	Range	Resolution	Accuracy	Code	Kg
MITRA 50	200-250/800	0.01	$\pm 0.01$	00676	0,640

**APPLICATION** APPLICAZIONE



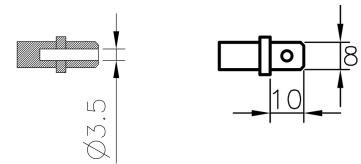
**ACCESSORIES** ACCESSORI

MOBILE PROBE  
TASTATORE MOBILE



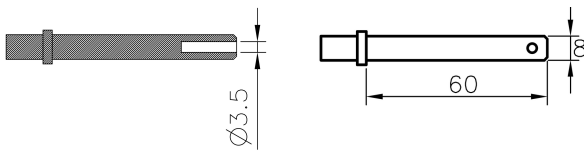
Article	Code	Kg
TAS13	00677	0,02

PROBE FOR RANGE 200-250  
TASTATORE PER UTILE 200-250



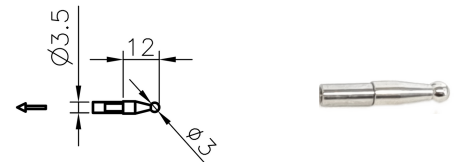
Article	Code	Kg
TAS10	00678	0,02

PROBE FOR RANGE 250-300  
TASTATORE PER UTILE 250-300



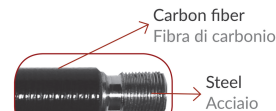
Article	Code	Kg
TAS60	00679	0,03

STANDARD EQUIPMENT Ø3

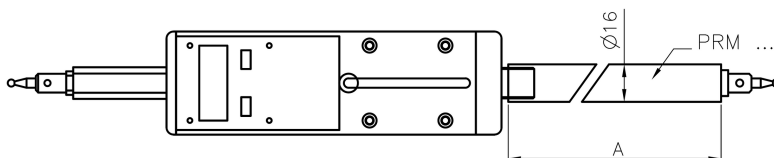


Article	Code
TS...	see page 135 of the DEMM catalog

**OPTIONAL EXTENTIONS** PROLUNGHE OPZIONALI



**OPTIONAL EXTENTIONS LIGHT WEIGHT**  
PROLUNGHE OPZIONALI CON STELO IN CARBONIO



Article	A mm	Code	Kg
PRM50	50	01910	0,040
PRM100	100	01911	0,080
PRM200	200	01912	0,120
PRM300	300	01913	0,160